

MULTIPLE FAMILIAL TRICHOEPITHELIOMA WITH MALIGNANT TRANSFORMATION

Dr. Vibhu Mendiratta¹, [Dr. Priyal Rhenjen Garbyal¹](#), Dr. Smita Singh²

Departments of ¹Dermatology and ²Pathology, Lady Hardinge Medical College, New Delhi

Poster ID: 23

INTRODUCTION

- Trichoepitheliomas are benign adnexal tumors originating from basal cells in the hair follicles.
- They can occur as solitary lesions or in clusters in the setting of multiple familial trichoepithelioma (MFT).
- They can rarely undergo malignant transformation to basal cell carcinoma (BCC).

CASE DISCRPTION

- A 19-year-old male presented with history of multiple skin-colored, raised lesions predominantly present over central part of face for the past 4 years.
- Gradually increased in number, leading to cosmetic disfigurement.
- Other family members, including his mother, male sibling and maternal uncle, were similarly affected.



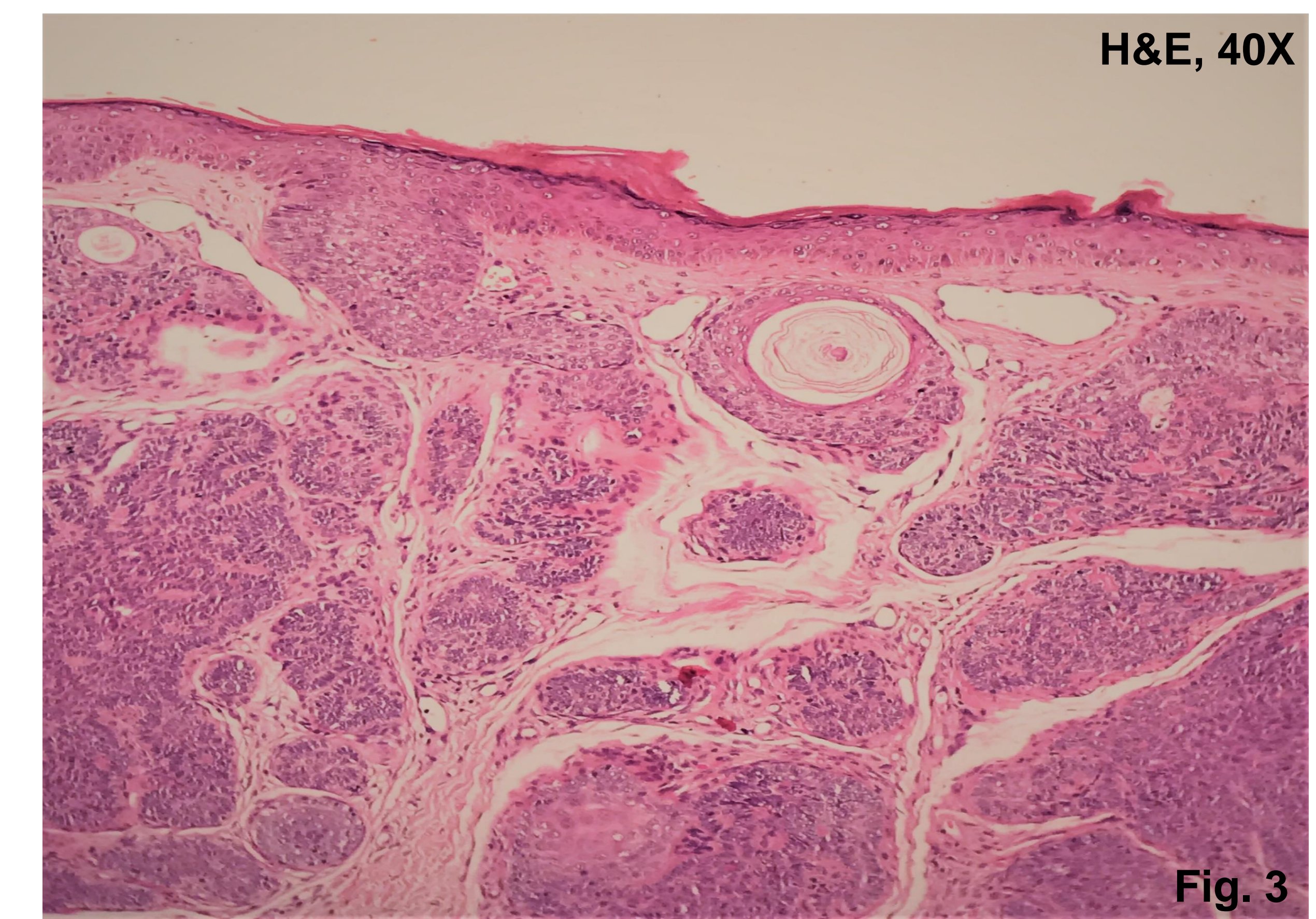
Fig. 1



Fig. 2

- Multiple, round, smooth, shiny, firm, skin-colored well-circumscribed papules and nodules of varying sizes present over the dorsum and sides of nose, nasal-alar sulci, nasolabial folds, the upper cutaneous lip, medial eyebrows (Fig. 1).
- No significant lymphadenopathy was present.
- Similar lesions present in mother (Fig. 2).

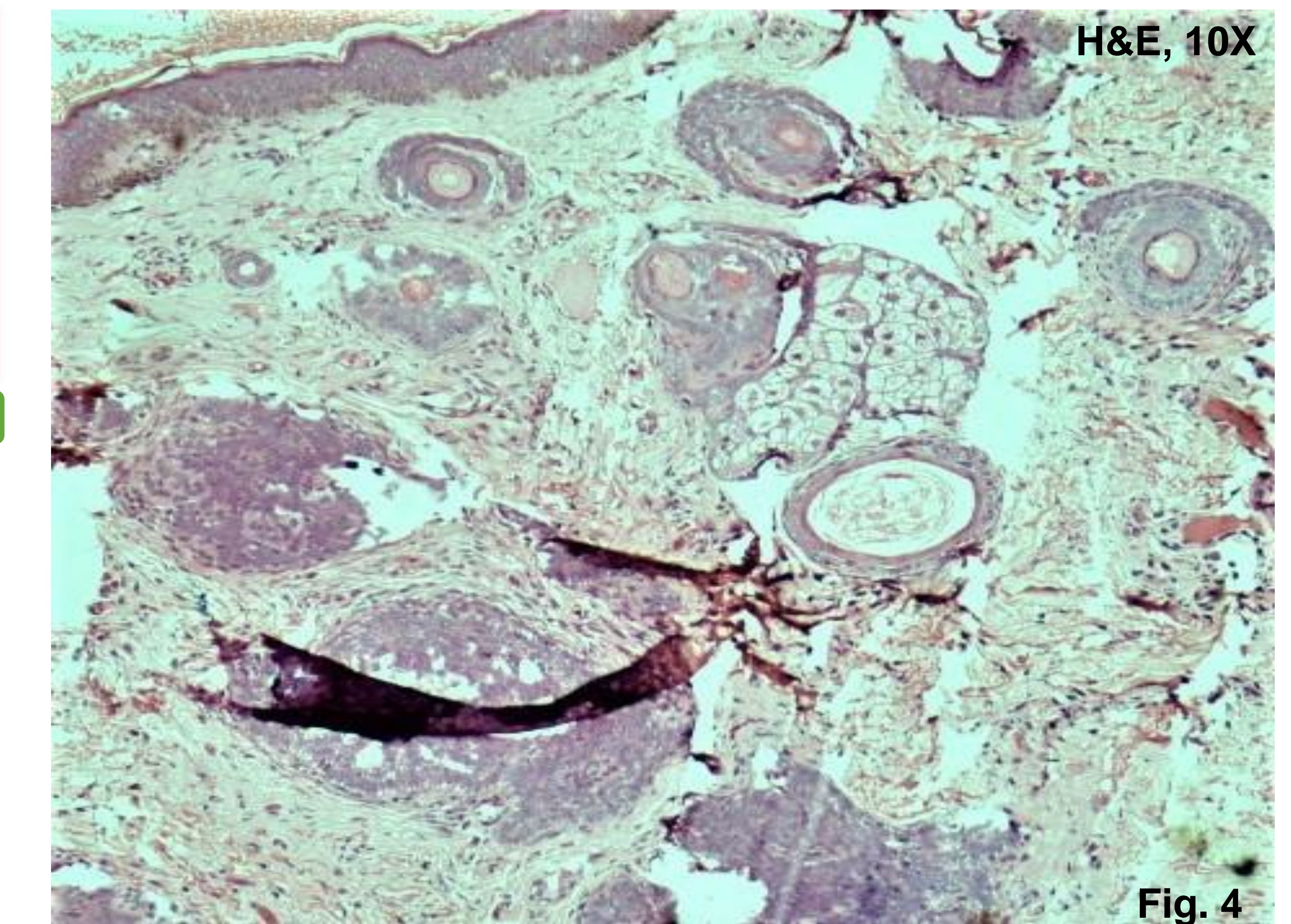
HISTOPATHOLOGY



H&E, 40X

Fig. 3

- HPE revealed islands of basaloid cells extending from the epidermis to the dermis with peripheral palisading and prominent stromal epithelial retraction artifacts, suggestive of BCC (Fig. 3).
- On immunohistochemical staining, basaloid tumor islands showed diffuse positivity for Bcl2, ki67 was 20% and CK20 was negative.
- Biopsy of the adjacent lesion showed nests of basaloid cells with horn cysts in dermis and unremarkable epidermis, suggestive of trichoepithelioma (Fig. 4).



H&E, 10X

Fig. 4

- Treatment: 5% Imiquimod cream¹ and radiofrequency ablation.

CONCLUSION

- In MFT, transformation to BCC is rare and occur late in the course of the disease, characterised by rapid growth or ulceration in the pre-existing lesions.^{1,2}
- However, in our patient, BCC occurred at a younger age, without any specific clinical changes suggestive of malignant transformation, which has not been reported in the past.
- Careful examination and follow up is needed in patients of MFT to look for malignant transformation.

REFERENCES

- McGee JS, Suchter MF, Milgraum SS. Multiple familial trichoepithelioma successfully treated with CO₂ laser and imiquimod. *Skinmed*. 2016 Dec 1;14(6):467-468.
- Kallam AR, Satyanarayana MA, Aryasomayajula S, Rama Krishna BA. Basal cell carcinoma developing from trichoepithelioma: Review of three cases. *Journal of clinical and diagnostic research*. 2016;10(3):PD17-PD19.